

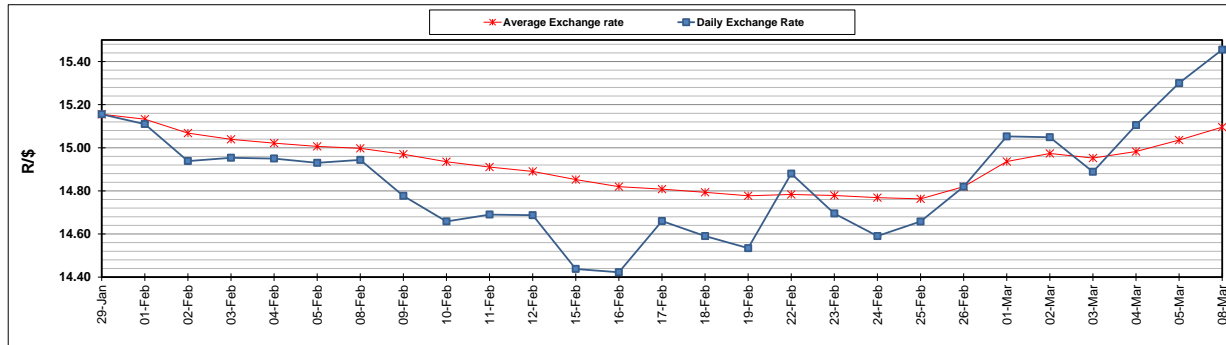
	PETROL 95 ULP	PETROL 93 ULP & LRP	DIESEL 0.05%	DIESEL 0.005%	ILL. PAR.
GAUTENG PUMP PRICE (SA c/l) AS FROM 03/03/2021	1,632.000	1,615.000	-	-	-
WHOLESALE PRICE (SA c/l) AS FROM 03/03/2021	-	-	1,412.420	1,416.820	845.688
SINGLE NATIONAL MAXIMUM RETAIL PRICE	-	-	-	-	1,071.000
BASIC FUEL PRICE - 08/03/2021 (SA c/l)	773.301	761.400	742.480	745.064	719.241
PRESS RELEASE CONTRIBUTION TO BFP 03/03/2021 - 08/03/2021 (SA c/l)	665.170	658.170	653.630	658.030	633.128
UNIT OVER/(UNDER) RECOVERY - 08/03/2021 (SA c/l)	(108.131)	(103.230)	(88.850)	(87.034)	(86.113)
AVERAGE BASIC FUEL PRICE 26/02/2021 - 08/03/2021	726.184	716.128	699.218	702.318	676.679
AVERAGE UNIT OVER/(UNDER) RECOVERY 26/02/2021 - 08/03/2021	(88.871)	(85.815)	(68.731)	(68.288)	(63.694)

### ANALYSIS MOVEMENT OF AVERAGE OVER/(UNDER) RECOVERY

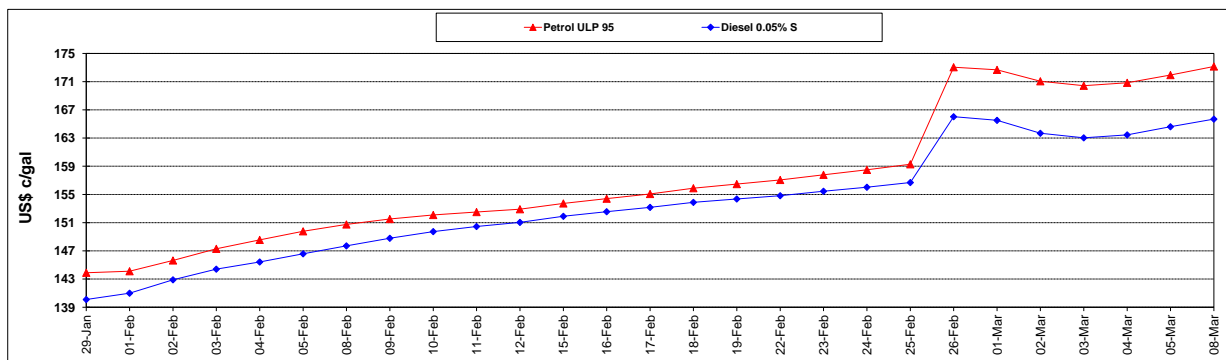
	PETROL 95	PETROL 93	DIESEL 0.05%	DIESEL 0.005%	ILL. PAR.
- MOVEMENT IN INTERNATIONAL PRODUCT PRICES	(72.871)	(70.037)	(53.325)	(52.814)	(48.785)
- MOVEMENT IN EXCHANGE RATE	(16.000)	(15.778)	(15.406)	(15.474)	(14.909)
AVERAGE UNIT OVER/(UNDER) RECOVERY 26/02/2021 - 08/03/2021	(88.871)	(85.815)	(68.731)	(68.288)	(63.694)

### R/\$ EXCHANGE RATE - (R/\$15.4550 - 08/03/2021)

#### EXCHANGE RATE USED IN BASIC FUEL PRICE



#### INTERNATIONAL PRODUCT PRICES OF BASKET USED IN BASIC FUEL PRICE



#### BASIC FUEL PRICE IN SA CENTS PER LITRE

